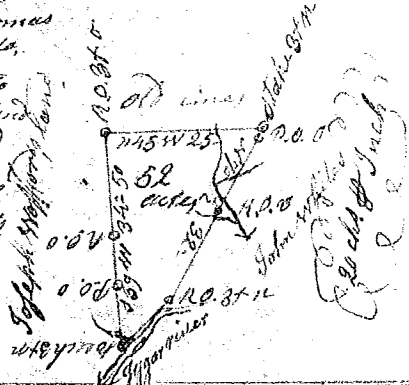
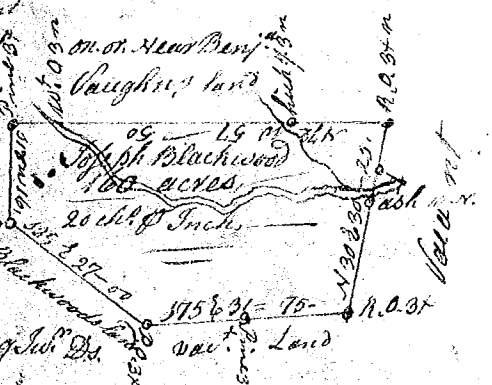


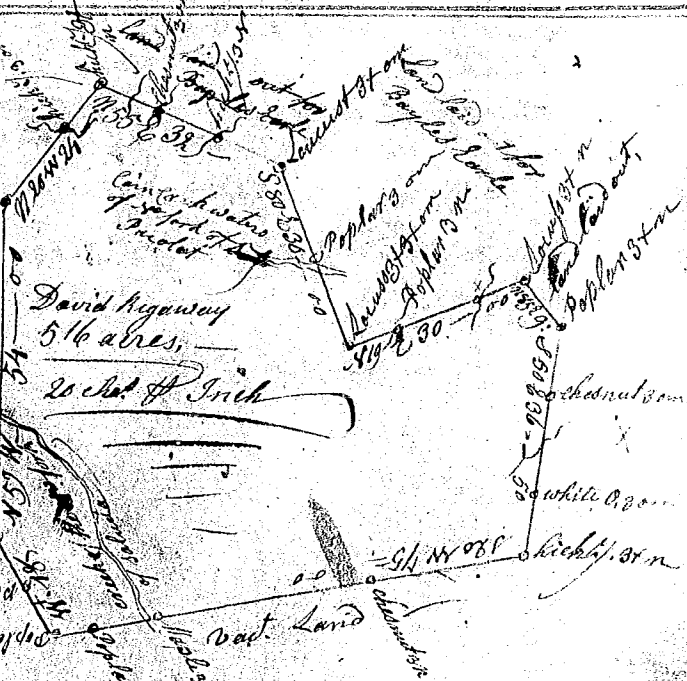
South Carolina Pursuant to a warrant from John Thomas Esq. Comptroller of Locations in 96 District N. Saluda,  
 Dated 21<sup>st</sup> May 1798, I have admeasured and laid out unto  
 Jeremiah Wofford a tract of fifty ~~two~~ acres of land  
 in said district, on the south side of Tigar river bounded  
 N.W. by said river runs S.W. with Joseph Wofford's land  
 N.E. with old line N.E. with John White's land, and hath  
 such shape form & marks as the above Plat represents  
 Survey 27<sup>th</sup> May 1799. Jas. Wofford Esq.  
 Recorded 25<sup>th</sup> July 1799 Del. A. White



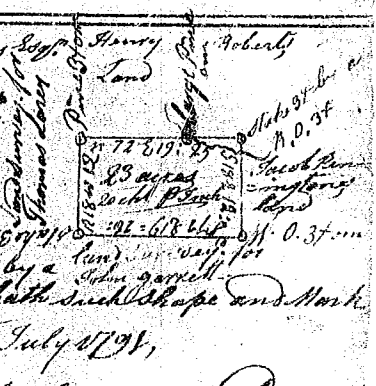
State of South Carolina Pursuant to a warrant  
 from John Thomas Esq. Comptroller of Locations dated 9<sup>th</sup> July 1799  
 I have admeasured unto Joseph Blackwood a tract of  
 one hundred and sixty acres of land in 96 District  
 Spartanburg County on both sides of Githones  
 Creek of 5<sup>th</sup> Pocolate river, bounded N. on or near  
 Benj<sup>r</sup> Vaughns land S.E. on said Blackwoods  
 land, all other sides on vacant land, and  
 hath such shape, form and marks as the above  
 Plat represents, Survey 16<sup>th</sup> July 1799 John Young Esq. Esq.  
 Recorded 25<sup>th</sup> July 1799 Del. self



State of S<sup>c</sup> Carolina Pursuant to a  
 Ninth Six District Warrant from  
 John Thomas Esq. Comptroller  
 of Locations dated 25<sup>th</sup> April 1799  
 I have admeasured and laid out  
 unto David Redgway, Esq. a  
 tract of five hundred & sixteen  
 acres of land, on the waters of Saluda  
 and Pocolate rivers, bounding S.E.  
 & N.E. on lands surveyed for Bayles  
 Earle, S.E. & N.W. on land laid out  
 on all other sides on unadmeasured  
 vacant land, and hath such shape  
 form & marks as the above Plat  
 Represents,  
 Survey 2<sup>nd</sup> May 1799 - B. Arnold Esq.  
 Recorded 29<sup>th</sup> July 1799 Del. self



South Carolina Pursuant to a warrant from John Thomas Esq. Comptroller of Locations dated 25<sup>th</sup> July 1798, I have admeasured and laid out unto Eleanor Johnston a tract of 23 acres of land, in Newberry County 96 District on Heddy's creek waters of Broad river, bounded by a line running N18W by land surveyed for Thomas Lacey, by a line running N18E by land of Henry Roberts, by a line running S19E by land of Jacob Pennington, by a line running S72W by land surveyed for John Garrett, and hath such shape and marks as the above Plat represents  
 Survey 21<sup>st</sup> July 1799,  
 Recorded 30<sup>th</sup> July 1799, Del. self



A. Pearson Esq.